



4B, Merchant Square,
Paddington, W2

£1,660 Per Week,

NAPIER WATT

T: 0207 935 0011
E: enquiries@napierwatt.co.uk
W: napierwatt.co.uk

35 Berkeley Square, Mayfair, London, W1J 5BF







Description

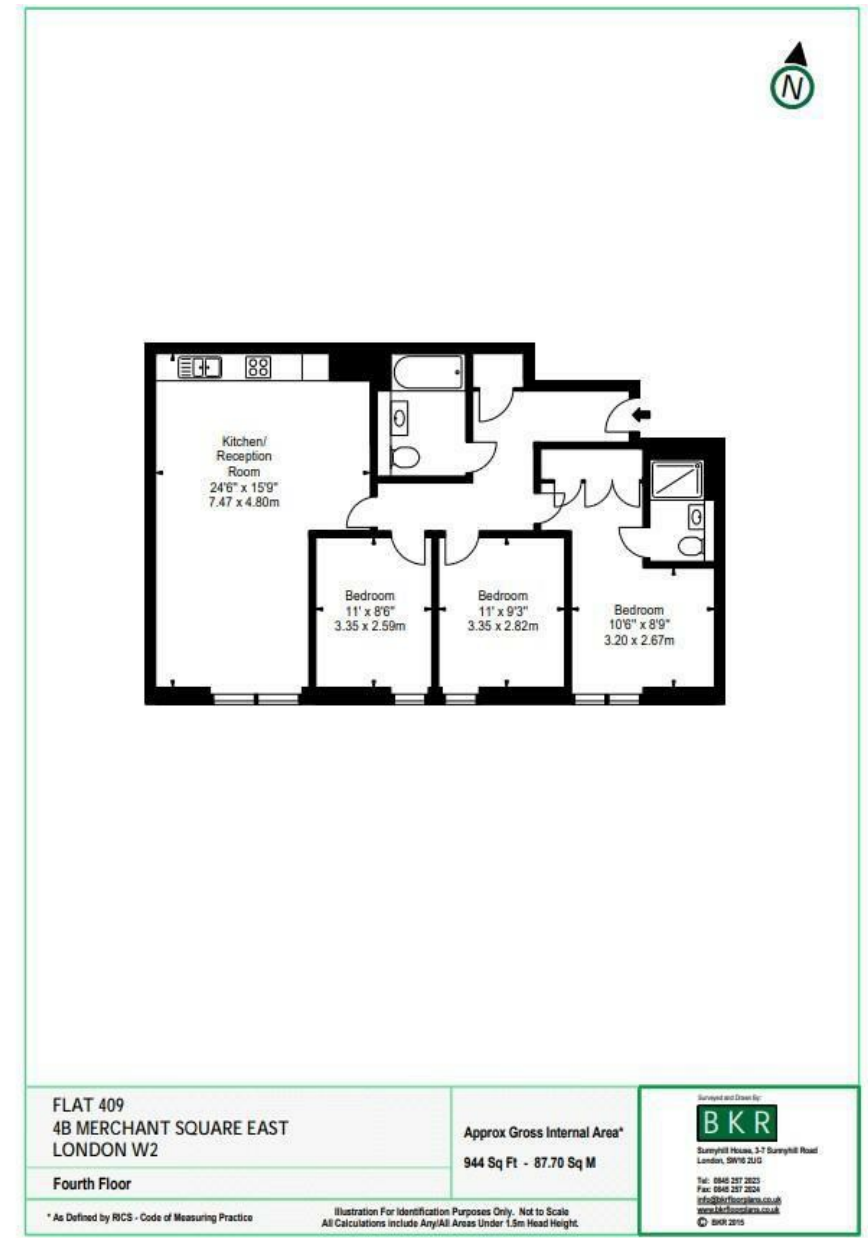
A stunning interior designed apartment with water views, set within the heart of the Paddington Basin and close to the popular West End Quay. It comprises a beautiful reception room with superb views, a modern fully fitted open plan kitchen, three bedrooms, two bathrooms and ample storage space. The apartment is situated on the fourth floor of this prestigious building, which features concierge, lift service, and free and secure underground parking. The apartment offers easy access to superb transport links such as Paddington Train Station (Elizabeth line, Bakerloo, Hammersmith & City, Circle, District lines and Heathrow) Edgware Road (Circle, District and Bakerloo lines).

Key Features

- 24 HOUR EMERGENCY HELPLINE
- CCTV
- LIFTS
- CONCIERGE SERVICE
- FURNISHED OR UNFURNISHED
- PARKING

Terms

Fees & Charges: Tenancies exceeding £100,000 Per annum £480 inc VAT, Tenancies where a company is a tenant £480 Inc VAT.



IMPORTANT: We would inform prospective purchasers that these sales particulars have been prepared as a general guide only. A detailed survey has not been carried out, nor the services, appliances and fittings tested. Room sizes should not be relied upon for furnishing purposes and are approximate. If floor plans are included, they are for guidance only and illustration purposes only and may not be to scale. If there are any important matters likely to affect your decision to buy, please contact us before viewing the property.